

WEEE Number: 80133970

### INSTALLATION INSTRUCTION

#### GARDEN SPIKE LAMP

#### TECHNICAL DATA

Model	VT-7701
Rated Load	50W
Base	GU10 (Bulb not included)
Material	Aluminium
Dimension	∅100x92x270mm
Input Power	AC: 220-240V, 50Hz

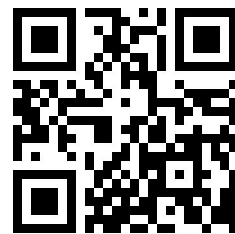


#### INTRODUCTION

Thank you for selecting and buying V-TAC product. V-TAC will serve you the best. Please read these instructions carefully before starting the installation and keep this manual handy for future reference. If you have any other query, please contact our dealer or local vendor from whom you have purchased the product. They are trained and ready to serve you at the best. The warranty is valid for 3 years from the date of purchase. The warranty does not apply to damage caused by incorrect installation or abnormal wear and tear. The company gives no warranty against damage to any surface due to incorrect removal and installation of the product. The products are suitable for 10-12 Hours Daily operation. Usage of product for 24 Hours a day would void the warranty. This product is warranted for manufacturing defects only.

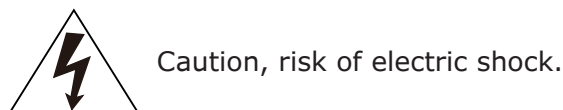
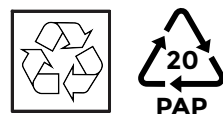
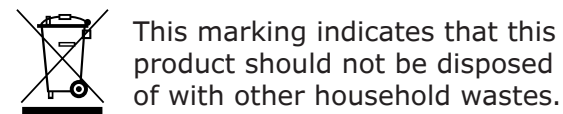
#### WARNING!

1. Please make sure to turn off the power before starting the installation.
2. Installation should only be done by a certified electrician.
3. Proper grounding should be ensured throughout the installation.
4. Waterproof Box not included.

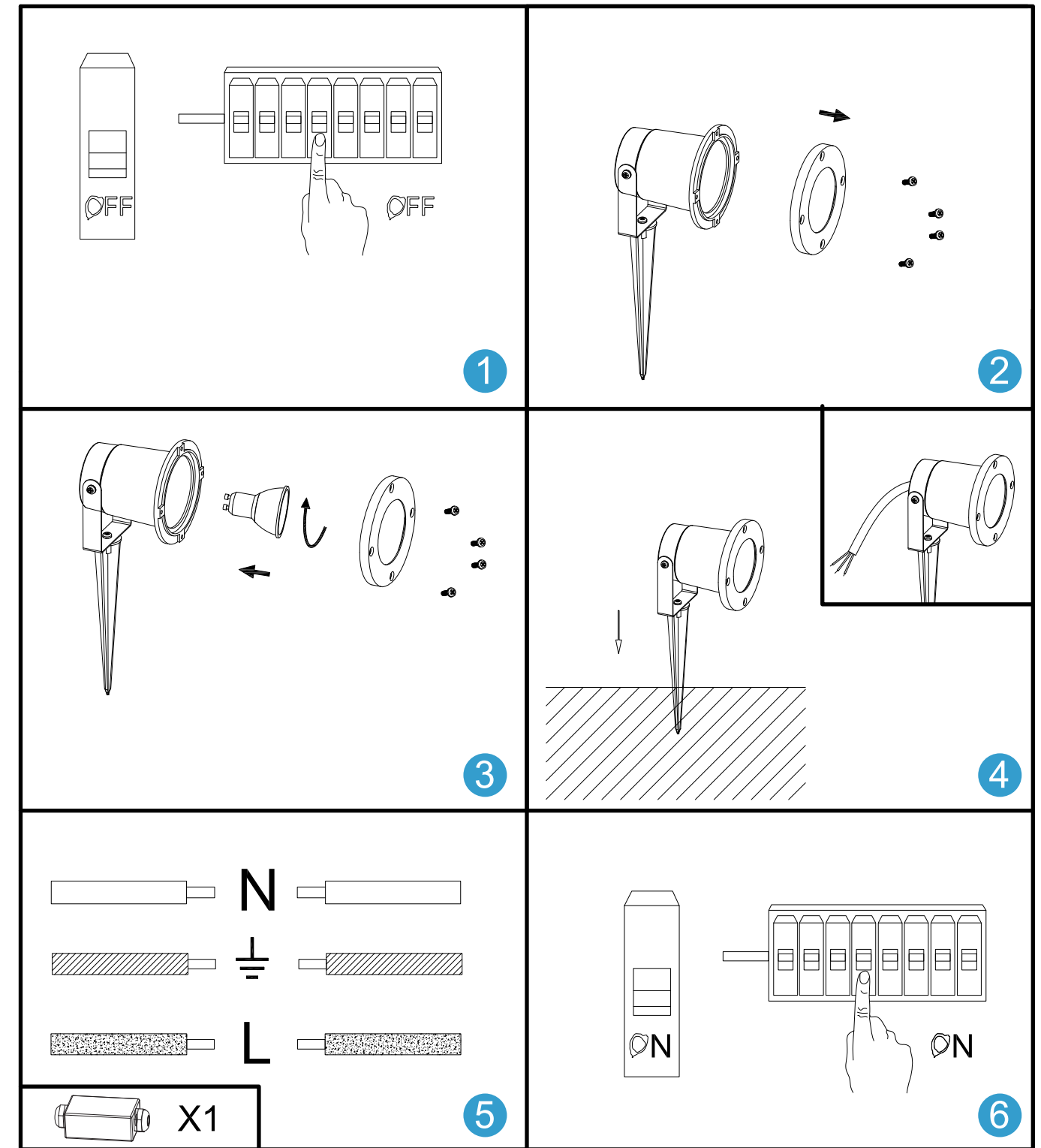


#### MULTI-LANGUAGE MANUAL QR CODE

Please scan the QR code to access the manual in multiple languages.



#### INSTALLATION DIAGRAM:



#### INSTALLATION INSTRUCTION

- Switch off the power.
- Install and fix the lamp according to the diagram.
- Connect the supply leads with terminal(The box not included).
- Fix the fitting on the ground.
- Switch on the power and test if the light is working properly.