



Meaningful Innovation.

WEEE Number: 80133970

# INSTRUCTION MANUAL

## GU10 FITTING ROUND-WHITE

### TECHNICAL DATA

MODEL	VT-859
SKU	3696, 3697
MAX WATTAGE	35 W
SHAPE	Round
HOLDER	GU10 (Included)
MATERIAL	Gypsum
VOLTAGE	AC: 220-240, 50Hz
PROTECTION RATING	IP20
UNIT COLOUR	White
DIMENSION	Ø100 x 40 mm
CUT OUT SIZE	Ø103 mm



**02** YEAR  
WARRANTY\*

### INTRODUCTION & WARRANTY

Thank you for selecting and buying V-TAC product. V-TAC will serve you the best. Please read these instructions carefully before starting the installation and keep this manual handy for future reference. If you have any other query, please contact our dealer or local vendor from whom you have purchased the product. They are trained and ready to serve you at the best. The warranty is valid for 2 years from the date of purchase. The warranty does not apply to damage caused by incorrect installation or abnormal wear and tear. The company gives no warranty against damage to any surface due to incorrect removal and installation of the product. This product is warranted for manufacturing defects only.

### WARNING

1. Please make sure to turn off the power before starting the installation.
2. Installation must be performed by a qualified electrician.
3. For Indoor use only



### MULTI-LANGUAGE MANUAL QR CODE

Please scan the QR code to access the manual in multiple languages.



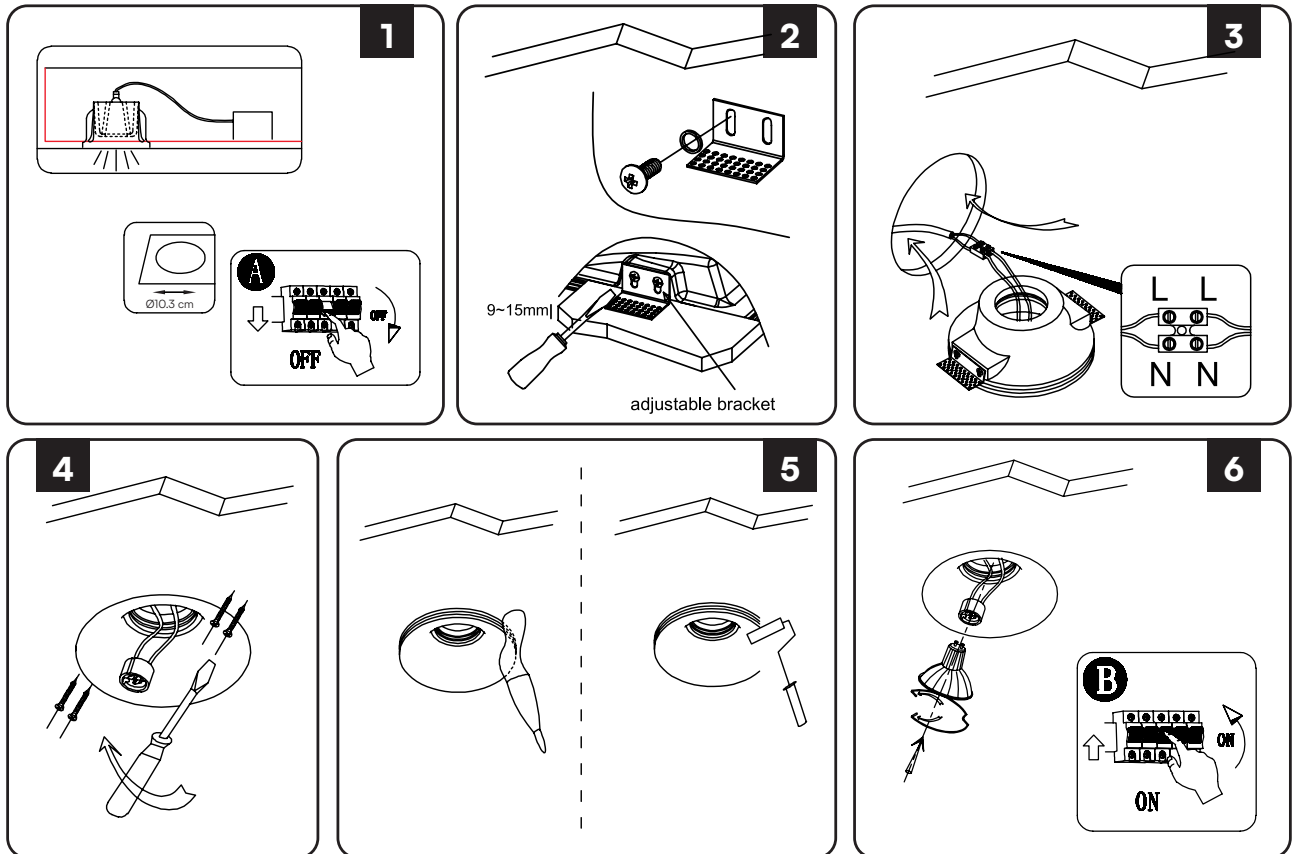
This marking indicates that this product should not be disposed of with other household wastes.



Caution, risk of electric shock.

In case of any query/issue with the product, please reach out to us at: [support@v-tac.eu](mailto:support@v-tac.eu)  
For More products range, inquiry please contact our distributor or nearest dealers.  
V-TAC EUROPE LTD. Bulgaria, Plovdiv 4000, bul.L.Karavelow 9B

## INSTALLATION INSTRUCTION



RoHS



UK  
CA

