

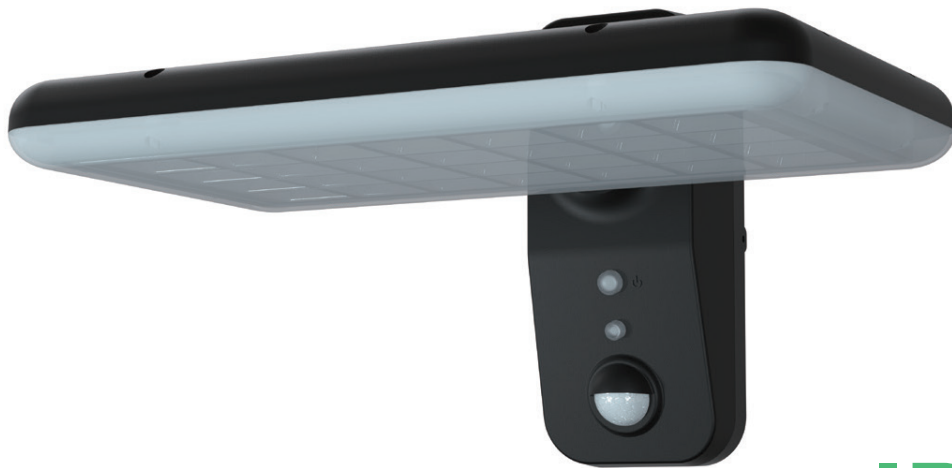


Meaningful Innovation.

WEEE Number: 80133970

INSTRUCTION MANUAL

LED SOLAR YARD LIGHT



**IP65
RATING**

INTRODUCTION

Thank you for selecting and buying V-TAC product. V-TAC will serve you the best. Please read these instructions carefully before starting the installation and keep this manual handy for future reference. If you have any another query, please contact our dealer or local vendor from whom you have purchased the product. They are trained and ready to serve you at the best.



This marking indicates that this product should not be disposed of with other household wastes.

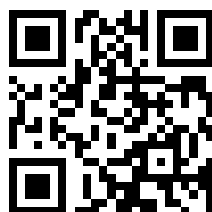


Caution, risk of electric shock.

RoHS



**UK
CA**



MULTI-LANGUAGE MANUAL QR CODE

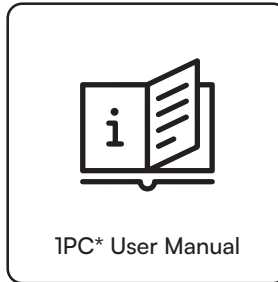
Please scan the QR code to access the manual in multiple languages.

In case of any query/issue with the product, please reach out to us at: support@v-tac.eu
For More products range, inquiry please contact our distributor or nearest dealers.
V-TAC EUROPE LTD. Bulgaria, Plovdiv 4000, bul.L.Karavelow 9B

TECHNICAL DATA

| | |
|---------------------|---|
| MODEL | VT-414 |
| SKU | 10315,10316 |
| LUMENS | 2000 LM |
| OUTPUT POWER | 15 W |
| EQUIVALENT WATT | 150 W |
| LEDs | SMD 2835x112 pcs |
| OPTIONAL CCT | |
| BATTERY PACK | 32700, 3.2V, 6000mAh, 19.2Wh |
| MONO SOLAR PANEL | DC 4.5V, 6W |
| PIR SENSOR | 120° / 6-8 Meters |
| BEAM ANGLE | 240° Adjustable |
| WORD MODES | Sensor Mode; Keep Lighting Mode |
| CHARGING TIME | 5 Hours strong sunshine to fully charge |
| LIGHTING TIME | Up to 80 Hours |
| INSTALLATION HEIGHT | |
| LIGHTING AREA | |
| HOUSING MATERIAL | ABS+PC, Anti-UV, Antioxidant, Fireproof |
| LAMP DIMENSION | 294x236x77mm |
| PACKING | 1xSolar lamp, 4xExpansion Plugs 1xScrew, 1xUser Manual |
| WARRANTY | |

PACKAGE CONTENT



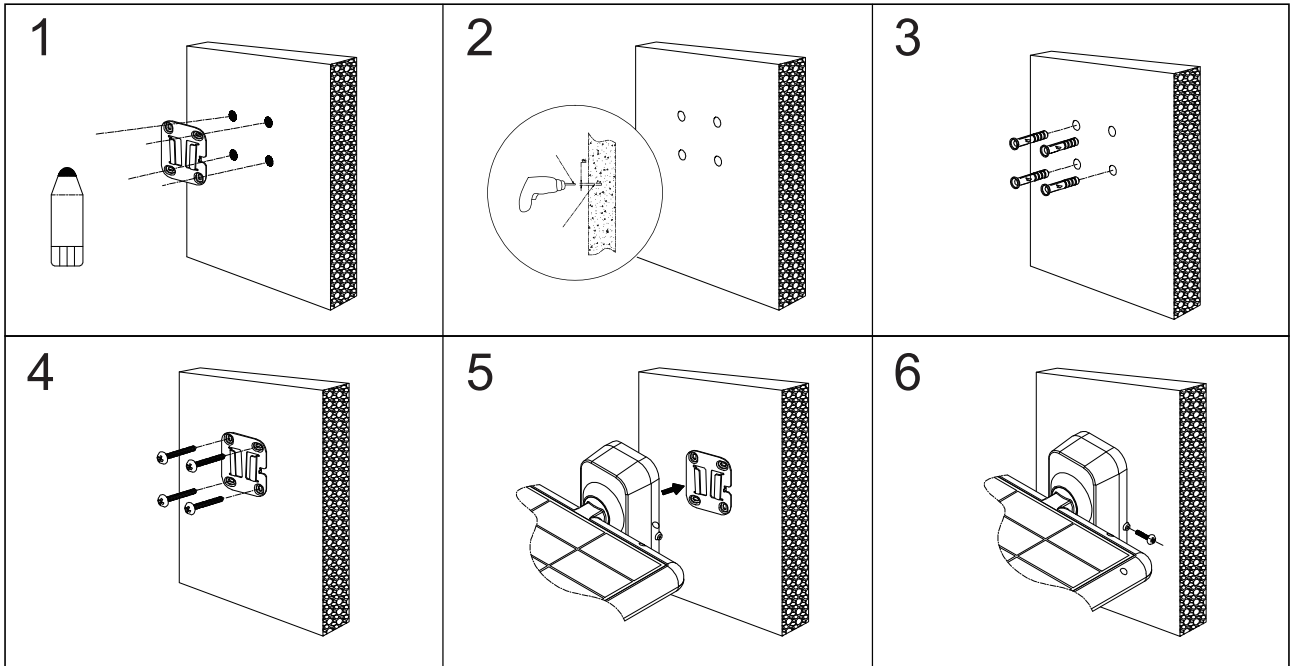
WARNING

1. This is a solar powered lamp, please install it in a location where can get efficient sunlight.
2. Please note the lighting time depends on sunshine duration & work mode.
3. Built-in intelligent IC is with over-charge and over-discharge protection, safe and durable.
4. When the lamp is turned off, it still can get solar charging at day time.
5. Non-professionals please do not disassemble the lamp.
6. Please do not dispose the battery with household garbage to avoid explosion.

NOTICE

1. This is a solar powered lamp, please install the solar panel in a location where can get enough sunshine.
2. Please note the lighting time depends on sunshine duration & working mode.
3. The On/Off button on the lamp is power-off switch, helpful to save power consumption.
4. Also the lamp can still get solar charge at day time when the lamp is turned off.
5. Built-in intelligent IC is with over-charge and over-discharge protection, safe & durable.
6. The lamp is equipped with an internal battery pack, which is replaceable.
7. If any need, please contact seller for correct new battery pack.
8. Non-professionals please do not disassemble the lamp.
9. Please do not dispose the battery with household garbage to avoid explosion.

INSTALLATION



1. Mark the positions of the 4 holes on the wall according to the base.
2. Drill 4 holes with a diameter of $\Phi 6\text{mm}$ and a depth of 60mm.
3. Insert the plastic expansion plugs into the holes.
4. Lock the base on the wall with screws.
5. Slide the lamp onto the base.
6. Tighten the anti-theft screw to fix the light to the base.

2 WORK MODES & 2 LIGHTING COLORS



ON/OFF/Switch Woke Mode

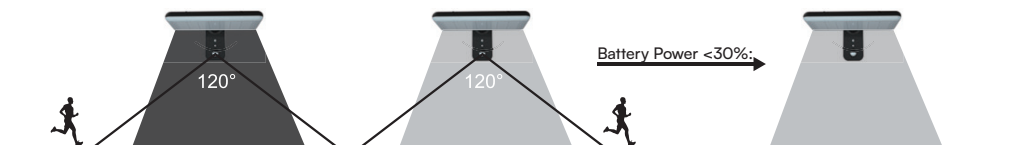
1. Press the button 1st time, the lamp turns on and enter Sensor Mode.
2. Press the button 2nd time, lamp shines once and turns to Keep Lighting Mode.
3. Press the button 3rd time, lamp turns off

Switch Lighting CCT

Please press the On/Off button to turn on the light, and then press this button to switch the color temperature.

MODE A: SENSOR MODE

Lamp automatically lights up at night and turns to full brightness when motion is detected in the range $\leq 8\text{mtrs}$, then dim to lower brightness after 20 seconds of no motion. When the battery power is below 30%, the lamp will remain dim brightness till dawn.



MODE B: LIGHTING MODE

Lamp automatically light up at night and keep 60% brightness, after 5 hours it turns to Sensor Mode.

