



Meaningful Innovation.

WEEE Number: 80133970

INSTRUCTION MANUAL

MAGNETIC LIGHTS



VT-42112
MAGNETIC FLEXIBLE TUBE



VT-42112
MAGNETIC FLEXIBLE TUBE

INTRODUCTION & WARRANTY

Thank you for selecting and buying V-TAC product. V-TAC will serve you the best. Please read these instructions carefully before starting the installation and keep this manual handy for future reference. If you have any another query, please contact our dealer or local vendor from whom you have purchased the product. They are trained and ready to serve you at the best. The warranty is valid for 3 years from the date of purchase. The warranty does not apply to damage caused by incorrect installation or abnormal wear and tear. The company gives no warranty against damage to any surface due to incorrect removal and installation of the product. The products are suitable for 10-12 Hours Daily operation. Usage of product for 24 Hours a day would void the warranty. This product is warranted for manufacturing defects only.

03 YEAR
WARRANTY*



**MULTI-LANGUAGE
MANUAL QR CODE**

Please scan the QR code to
access the manual in multiple languages.

In case of any query/issue with the product, please reach out to us at: support@v-tac.eu
For More products range, inquiry please contact our distributor or nearest dealers.
V-TAC EUROPE LTD. Bulgaria, Plovdiv 4000, bul.L.Karavelov 9B

TECHNICAL DATA

MODEL	SKU	INPUT VOLTAGE	POWER	LUMENS	BEAM ANGLE	CRI	IP RATING	BODY TYPE	DIMENSION
VT-42112	10277	DC 48V	11W	1270 Lm	200°	80	IP20	PC	1066x150x26mm
	10278	DC 48V	11W	1320 Lm	200°	80	IP20	PC	1066x150x26mm
VT-42024	10279	DC 48V	23W	2760 Lm	200°	80	IP20	PC	2066x150x26mm
	10280	DC 48V	23W	2850 Lm	200°	80	IP20	PC	2066x150x26mm

WARNING

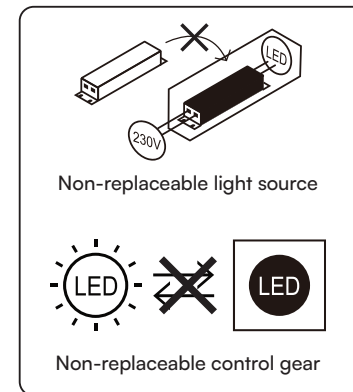
1. Please make sure to turn off the power before starting the installation.
2. Installation must be performed by a certified person.
3. Proper grounding should be ensured throughout the installation.
4. Do not connect with AC 220V directly. Use DC 48V transformer.
5. For Indoor use only



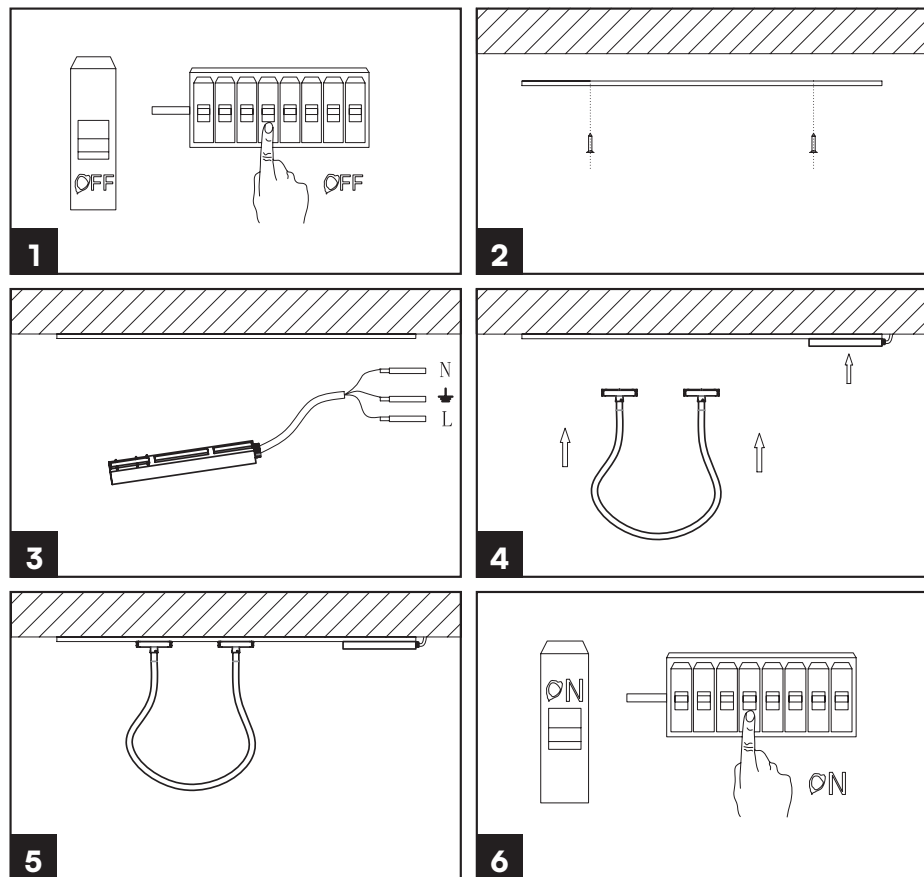
This marking indicates that this product should not be disposed of with other household wastes.



Caution, Risk of electric shock



INSTALLATION DIAGRAM



INSTALLATION INSTRUCTION

1. Turn off the power.
2. Drill a hole on the wall and insert the expansion plug into the holes.
3. Fix the rail on the wall using screws. (Figure).
4. Connect DC 48V power supply with the main supply. (Figure 3).
5. Install the luminaire on the track rail.
6. Switch on and test.